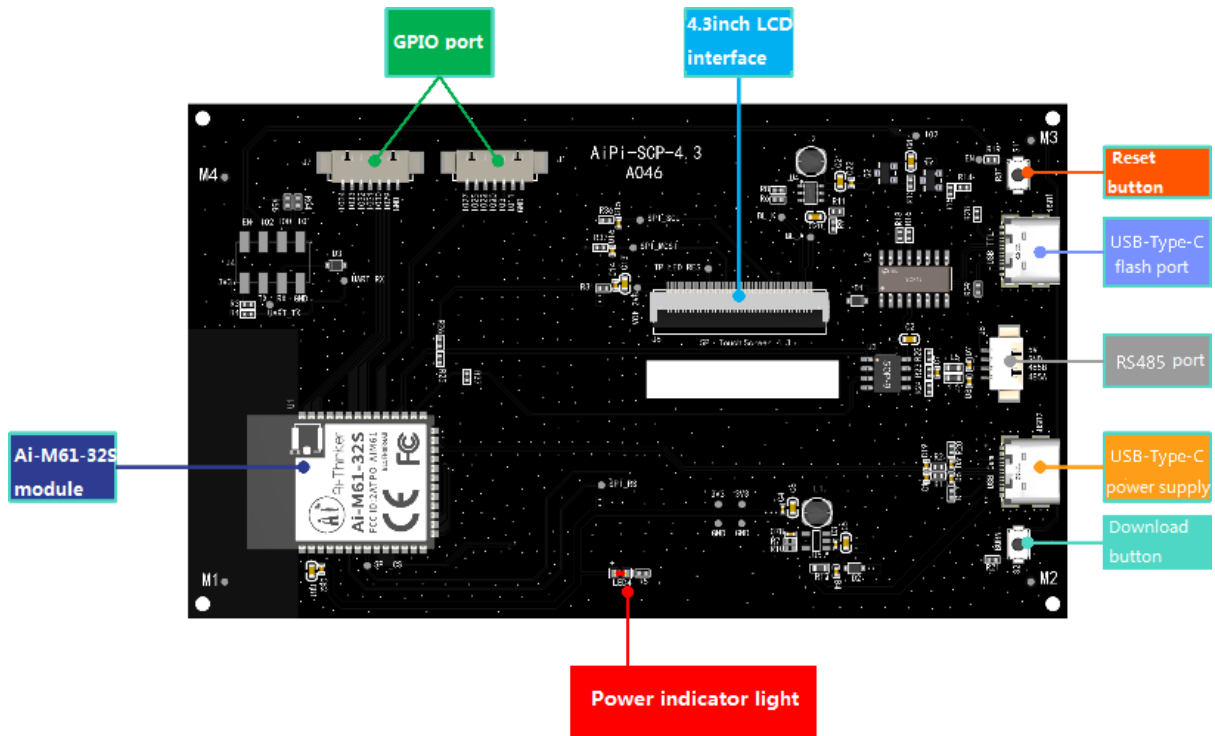


AiPi-SCP-4.3 Test Firmware Documentation

AiPi-SCP-4.3 is a screen driver development board specially designed by Ai-Thinker open-source team for Ai-M61-32S. It supports 4.3-inch SPI display, USB to Cam interface, and 485 interface.

This project is to realize the function of the intelligent instrument panel on the 4.3-inch display screen, which can realize the display content.



1. Firmware flashing

1).Serial port wiring

TTL tool	AiPi
3.3V	3.3V
TXD	RX
RXD	TX
GND	GND

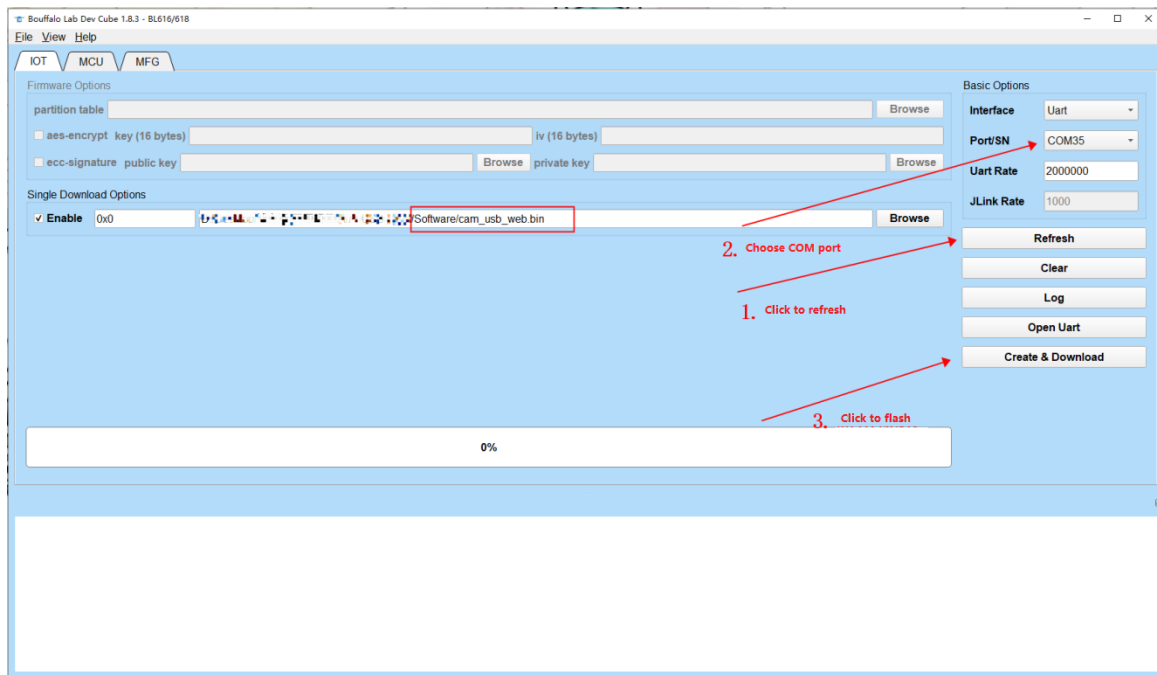
Or use a USB-Type-C cable to connect to USB1

2). Flashing

Burning tool download: [click to download](#)

Firmware address: [click to jump](#)

After the burning tool starts burning, press and hold the "download button" to enter the burning mode. The operation steps are as follows:



Note: After the firmware burning is completed, you need to press the reset button once before the program can run.

2. Usage steps

AiPi-SCP-4.3 Dashboard Firmware Demo



1). Instruction manual

There are three interfaces in the instrument panel, which are driving information interface, battery information interface, and lock interface.

2). Operating Instructions

AiPi-SCP-4.3 is equipped with two buttons, one is a reset button and the other is a download button. In this example, S2 (download button) is used as the button for interface switching. Initially, the driving information interface is displayed by default.

Driving Information Interface:

It can be used as a real-time updating interface for driving information. Display speed, maximum speed, average speed and other information.



Battery interface:

It can be used as a real-time updating interface for battery power or fuel information. Display information such as remaining power, driving distance, charging time, etc.



lock interface:

Interface that can be used as a lock screen.

